

Applications:

Off centre load cell Type L6G can be used in medium capacity weighing systems.

Some applications are:

- Small weighing platforms
- Hopper weighing, etc.

Main features:

- Universal use
- Low cost
- Aluminium construction
- OIML Certificates n.: R60/2000-CN-00.03
- Max Platform size 600x600

Portata nominale:

C3: Kg 50-100-150-200-250-300-500-600

C4: Kg 150-200-250-300-500-600



**OFF CENTER
LOAD CELL
TIPO L6G**

Specification according to VDI/VDE 2637

Metrological Characteristics	Par.	Un.	OIML R60 C3	OIML R60 C4
Nominal Load	Ln	Kg	50÷600	150÷600
Initial Load	Lp	%Ln	0	
Maximum Load	Ll	%Ln	150	
Combined Error	Fv	±%Ln	≤0,0230	≤0,0175
Nominal Temperature Range	Btn	°C	-10+40	

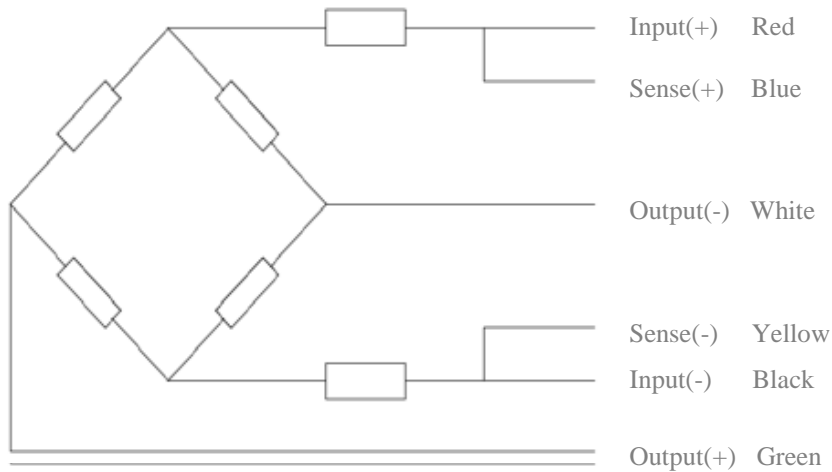
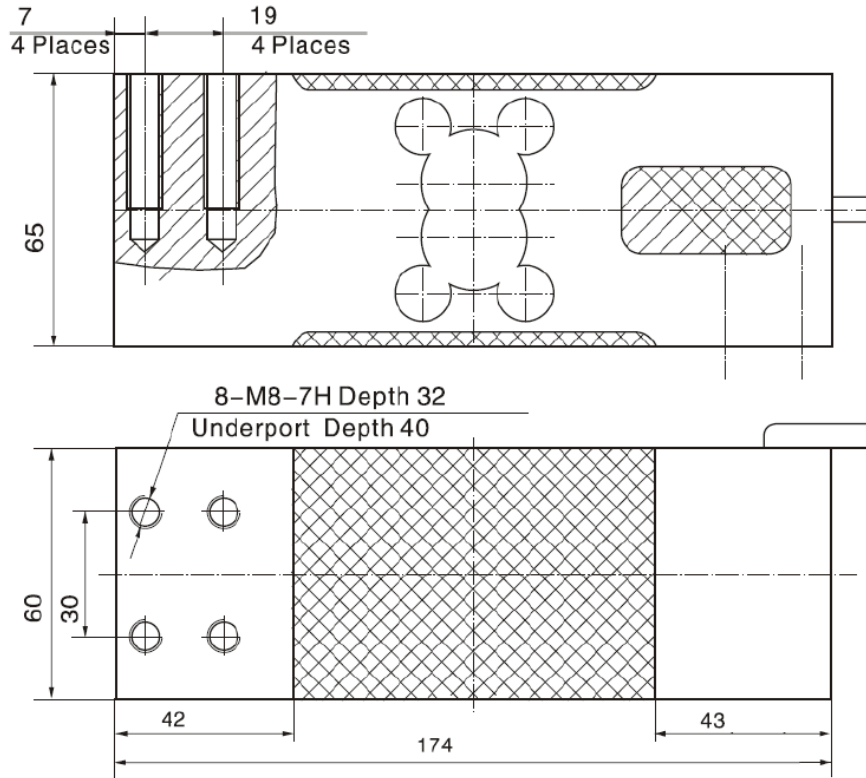
Electrical Data				
Nominal Output	Cn	mV/V	2	
Nominal Output Tolerance	Dc	±%Cn	10	
Nominal Supply Voltage	Bsu	V	5÷12	
Maximum Supply Voltage	Usmax	V	18	
Input Resistance	Re	Ω	409±6%	
Output Resistance	Ra	Ω	350±3%	
Insulation Resistance @20V	Ris	MΩ	>5000	
Zero Balance	Do	±%Cn	≤2	

Mechanical Data				
Breaking Load	Ld	%Ln	300	
Maximum Side Load	Llq	%Ln	100	
Deflection	hn	mm	<1	
Cable Length		m	3000	

Environmental Conditions				
Working Temperature Range	Btn	°C	-35+65	
Storage Temperature Range	Bts	°C	-40+70	
Housing Protection			IP -65	

Subject to change without notice

Dimensions: (in mm; 1mm = 0.03937 inches)



Wiring:

- Shielded, 6 conductor cable.
- Cable diameter: Ø6mm.
- Cable length: 3m.
- Shield connected to element.
- Cable jacket in PVC.